



Large Plot and New Product Evaluation

2016 Learning Center Demo Report
Monsanto Learning Center at Scott, MS



STUDY GUIDELINES

- Multiple Asgrow[®] brand soybean products were planted in 7.5-inch x 38-inch twin rows on April 18, 2016, using a Monosem[®] planter.
- Fertilizer was applied as needed.
- Soybeans were desiccated as needed and harvested over about three weeks in September 2016.



RESULTS & DISCUSSION

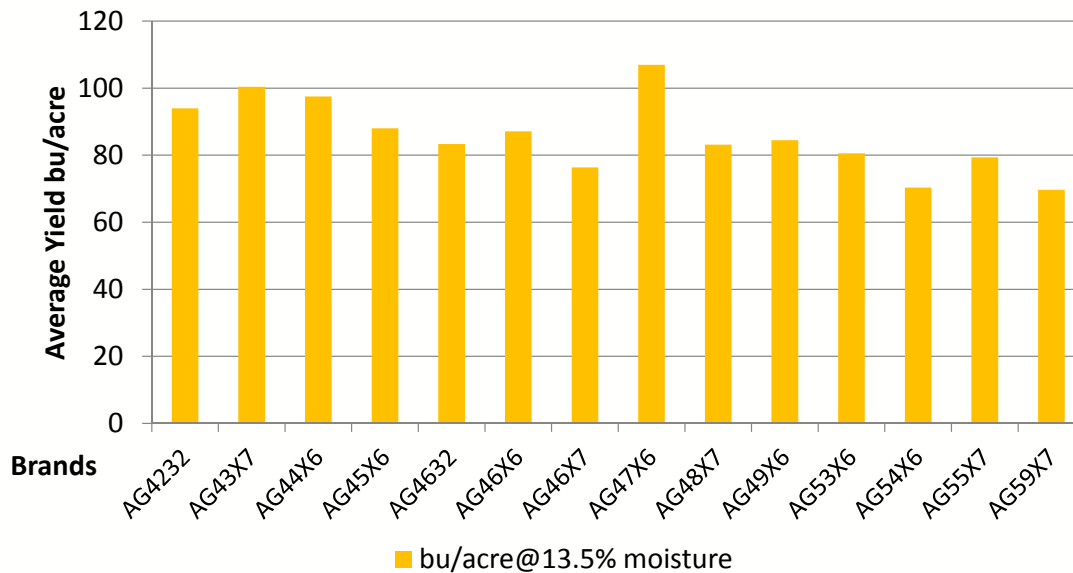


Figure 1. Average yield of multiple soybean brand products planted in 7.5-inch x 38-inch rows.

Large Plot and New Product Evaluations



TAKE AWAYS

- As in cotton, some decrease in yield was observed in the later varieties due to late season disease.
- The Roundup Ready® 2 Xtend soybean products that were tested had at least as high yield potential when compared to the standards.
- AG47X6 had exceptionally high potential at Scott, MS during 2016. We are still investigating the potential causes.

Large Plot and New Product Evaluations



TAKE AWAYS

- High yields were obtained with products spanning a large relative maturity range.
- Several early maturity group (MG) 4 products yielded at or above the level of most mid to late MG 4 products, showing value of earlier MG 4 products in the early planting system.

Large Plot and New Product Evaluations



STUDY GUIDELINES

- Multiple DEKALB[®] brand corn products were planted in 38-inch single rows, using Precision Planting[®] vSet[®] Select planters and DeltaForce[®] down pressure, on March 26, 2016.
- Seed were planted at a rate of 37,500 kernels/acre.
- Nitrogen was applied at a rate of 240 lbs/acre as a 28% liquid.

Large Plot and New Product Evaluations



STUDY GUIDELINES

- Little lodging occurred.
- Corn was harvested on September 1, 2016.

Large Plot and New Product Evaluations



RESULTS & DISCUSSION

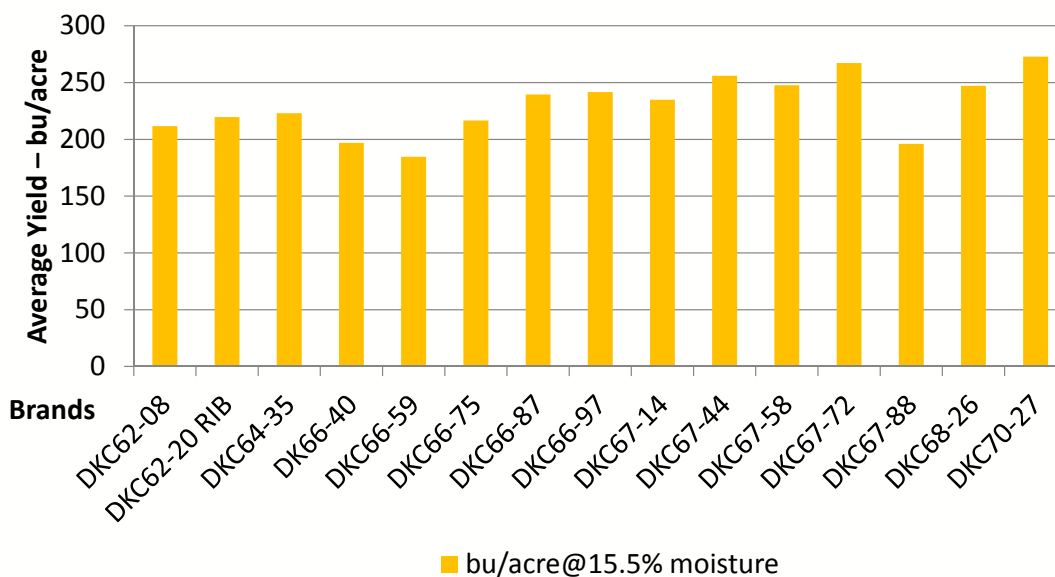


Figure 2. Average yield of multiple DEKALB® brand corn products planted in 38-inch rows.

Large Plot and New Product Evaluations



TAKE AWAYS

- Results should be carefully interpreted.
- Not all corn products should be planted at these populations.

Large Plot and New Product Evaluations



STUDY GUIDELINES

- Multiple Deltapine[®] cotton varieties were planted in 38-inch rows on May 11, 2016.
- Seeding rate was 41,000 seeds/acre.
- 28% nitrogen was sidedressed at a rate of 120 lbs/acre.
- A total of 48 oz/acre of PIX[®] was applied in three applications of 16 oz/acre each (June 13, June 22, and June 29).

Large Plot and New Product Evaluations



STUDY GUIDELINES

- Pest control (primarily for lygus) was applied as needed.

Large Plot and New Product Evaluations



RESULTS & DISCUSSION

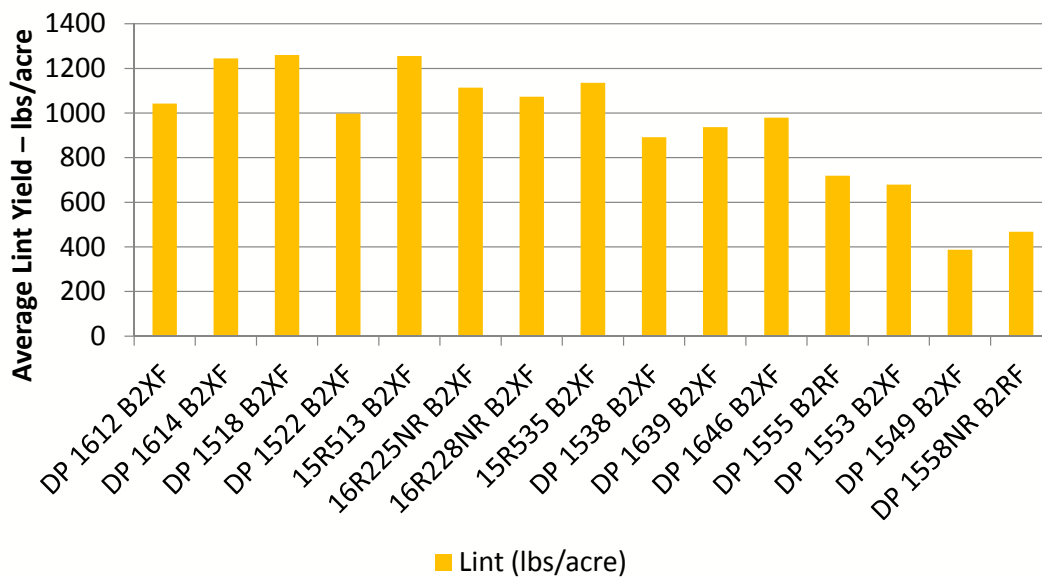


Figure 2. Average yield of multiple cotton products planted in 38-inch rows.

Large Plot and New Product Evaluations



TAKE AWAYS

- Due to mid-season rainfall, significant defoliation occurred from disease (primarily target spot).
- Later-maturing cotton varieties were particularly penalized by these factors.
- Fruit shed was also significant during the mid-season, due to disease, cloud cover, and carbohydrate demand.

Large Plot and New Product Evaluations



TAKE AWAYS

- Yield potential remained relatively high for most varieties even with these negative factors during the growing season.

Large Plot and New Product Evaluations



LEGAL STATEMENTS

The information discussed in this report is from a single site, non-replicated demonstration. This information piece is designed to report the results of this demonstration and is not intended to infer any confirmed trends. Please use this information accordingly.

Individual results may vary, and performance may vary from location to location and from year to year. This result may not be an indicator of results you may obtain as local growing, soil and weather conditions may vary. Growers should evaluate data from multiple locations and years whenever possible.

Monsanto Company is a member of Excellence Through Stewardship® (ETS). Monsanto products are commercialized in accordance with ETS Product Launch Stewardship Guidance, and in compliance with Monsanto's Policy for Commercialization of Biotechnology-Derived Plant Products in Commodity Crops. This product has been approved for import into key export markets with functioning regulatory systems. Any crop or material produced from this product can only be exported to, or used, processed or sold in countries where all necessary regulatory approvals have been granted. It is a violation of national and international law to move material containing biotech traits across boundaries into nations where import is not permitted. Growers should talk to their grain handler or product purchaser to confirm their buying position for this product. Excellence Through Stewardship® is a registered trademark of Excellence Through Stewardship.

Always read and follow IRM, where applicable, grain marketing and all other stewardship practices and pesticide label directions. Precision Planting®, Deltaforce®, and vSet® are registered trademarks of Precision Planting, LLC. Asgrow and the A Design®, Asgrow®, DEKALB and Design®, DEKALB®, and Roundup Ready 2 Xtend® are registered trademarks of Monsanto Technology LLC. Deltapine® is a registered trademark of Monsanto Company. All other trademarks are the property of their respective owners. ©2016 Monsanto Company. 161107090515 112316JEH.